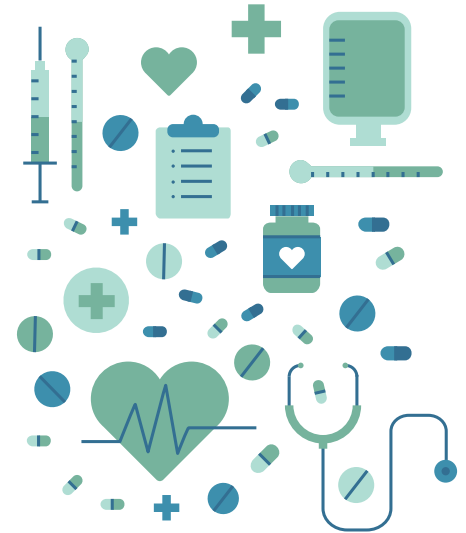


## Preventive Care 101

One of the best ways to stay healthy and save on healthcare costs is to take advantage of the preventive care services that are available to you at no additional charge. With Gravie, you have access to over 80 preventive care services, including annual wellness exams, select health screenings, vaccinations, select counseling services, supplements, preventive care prescriptions, medical devices, and more!



### Preventive care services you have access to include:

#### General Health

- Annual physical exam
- Blood pressure and cholesterol screenings
- Depression screening
- Diabetes screening
- Fall prevention for adults 65 years and over living in a community setting
- Healthy diet counseling
- Osteoporosis screening
- Sexually transmitted infection (STI) screening and prevention counseling

#### Women's Care

- Annual well-woman exam
- Contraception
- Sexually transmitted infection (STI) screening and prevention counseling

#### Vaccinations

- Diphtheria
- Hepatitis A
- Hepatitis B
- Herpes Zoster
- Human Papillomavirus (HPV)
- Influenza (flu shot)
- Measles
- Meningococcal
- Mumps
- Pertussis
- Pneumococcal
- Rubella
- Tetanus
- Varicella (Chickenpox)

#### Pregnancy Care

- Anemia screening
- Breastfeeding support and counseling
- Folic acid supplements
- Preeclampsia prevention and screening
- Sexually transmitted infection (STI) screening and prevention counseling
- Urinary tract or other infection screening

## Cancer Prevention

- Breast cancer screening
- Colorectal cancer screening
- Cervical cancer screening
- Lung cancer screening
- Skin cancer prevention counseling

## Mental Health and Drug Abuse

- Alcohol misuse screening and counseling
- Depression screening
- Tobacco use screening and counseling

## Children's Care

- Autism screening
- Behavioral assessments
- Blood pressure screening
- Healthy diet and obesity counseling
- Hearing and vision screenings
- Immunization vaccinations
- Lead screening
- Phenylketonuria (PKU) screening for newborns
- Well-baby and well-child exams

# New in 2020 — Expanded Preventive Care

All of Gravie's plans now have access to an expanded list of preventive care services, including:

- Angiotensin Converting Enzyme (ACE) inhibitors for those with congestive heart failure, diabetes, and/or coronary artery disease
- Anti-resorptive therapy for those with osteoporosis and/or osteopenia
- Beta-blockers for those with congestive heart failure and/or coronary artery disease
- Blood pressure monitor for those with hypertension
- Inhaled corticosteroids for those with asthma
- Insulin and other glucose lowering agents for those with diabetes
- Retinopathy screening for those with diabetes
- Peak flow meter for those with asthma
- Glucometer for those with diabetes
- Hemoglobin A1c testing for those with diabetes
- International Normalized Ratio (INR) testing for those with liver disease and/or bleeding disorders
- Low-density Lipoprotein (LDL) testing for those with heart disease
- Selective Serotonin Reuptake Inhibitors (SSRIs) for those with depression

For a complete list of all preventive care included in your plan, please reference the Summary Plan Description (SPD) found in your Gravie Member Account.